



LEWIS TEACHER TRAINING CENTRE



Key Facts



Dates

14 January - 11 April 2026
8 September - 5 December 2026
See pages 7-8



Times

Tuesdays / Thursdays 18.00 - 21.45
Certain Saturdays 9.00 - 17.30



Contact Time

130 hours
12 weeks + 1-week study break



Teaching Practice

6 hours observed teaching practice



Assessment

Assessed lessons
Take-home examination
Written assignments



Class Size

Maximum 12 trainees per class

Fees



Course Fees: £1278

The price does not include the Trinity moderation fee (£190 for in-school moderation and £180 for online moderation). This fee is subject to change by Trinity College London.

Deposit: A £200 deposit is required to secure your place on the course.

Become a Qualified English Language Teacher!



Part-Time CertTESOL Courses

- ✓ Internationally recognised qualification
- ✓ No prior teaching experience required
- ✓ Online course with choice of in-school or online teaching practice*

The Trinity CertTESOL is recognised worldwide. As an initial qualification, it's a popular choice for those embarking on a career in Teaching English as a Foreign Language (TEFL), but it's equally useful for those with experience in teaching other subjects, or those looking to consolidate their existing English language teaching skills.

It provides a firm foundation, equipping you with essential knowledge and highly practical skills to set you on your way in your English language teaching career. The course involves over 130 hours of contact time and includes six hours of observed teaching practice with international English language students. Input sessions are on Zoom and you can choose to do your teaching online or in person at our school in Southampton

Contents

Page

Welcome to our School and Training Centre	3
Course Content	4
Assessment & Pass Rates	5
How to Apply	6
Course Calendars	7

Welcome to Our School & Training Centre

We've been bringing language learning to life since 1976



The Lewis School of English has been teaching English to international students for 50 years. An independent, owner-managed and highly creative school, we specialise in teacher training, and have our own dedicated department, the Lewis Teacher Training Centre.

One great advantage of doing your teaching qualification with us is that you'll be able to meet our students and practise your teaching skills with them.

As well as being a registered Trinity examination centre, we are also a British Council accredited school and members of English UK and Quality English, so you can be sure of the high quality of our programme. We also received a Centre of Excellence from EL Gazette, which places us among the best language schools in the UK.

Your Tutors

All of our Lewis School CertTESOL tutors have years of teaching experience, both online and face-to-face, as well as a wealth of experience in teacher training.

Student-centredness is at the heart of what we do, and we will make sure that you are involved and engaged throughout the course, offering you support in your written assignments and teaching practice.



Photo at top: students at Lewis School of English.
Photo on right: CertTESOL graduates and tutors.

"The course at Lewis has a huge reputation... the tutors are highly experienced." Ian Bradley

Course Content

Input Sessions

The course begins with an exploration into theories behind learning and second language acquisition, and a brief overview of some English grammar. However, most of your language awareness will develop as you prepare for and teach your lessons. Your input sessions will focus more on developing skills and techniques for the classroom and will introduce you to the International Phonetic Alphabet (IPA) and pronunciation teaching. Along with all of this, and as you get to grips with lesson planning, you will then start to notice how this translates into the classroom. Input sessions will take place online.

You'll learn a 'mystery language' over three sessions and analyse the experience as both a student and a teacher, which will form the basis of your first assignment. For your second assignment you will work with an international student and will interview, record, assess, teach and prescribe a tailor-made course for them.



Observed Teaching Practice

One of the biggest advantages of our course is that you will have the chance to teach a class of international students. Following an opening period of only input sessions, teaching practice will start taking up the majority of your time on the course. After meeting and placing the students by level, you will deliver six 60-minute lessons (all observed). Each lesson will conclude with a feedback session with a tutor and some of your peers. Shortly after, you will write a short reflection of your lesson considering the feedback you received (not discounting your own!).

Every time you teach you will be expected to design materials for your lesson. Towards the end of the course you will select one piece of material from one of your lessons and evaluate its effectiveness.



CertTESOL trainees and their students after their final lesson

“Every session made sense and was integral to the entire course.” Donna Haynes

Assessment

Assessment is based on a combination of assessed lessons, a take-home examination and written assignments. We prepare you step-by-step for each of the assessments and provide you with a detailed assignment guide that explains the required content and timings for each piece of work. Our tutors are also available to advise you throughout the course.

Units	Description of assessment
Unit 1 Teaching Practice (TP) Teaching Practice Evaluation (TPE) Guided Observations	4x 1-hour assessed lessons* Reflective teaching journal Written report on lessons you observe
Unit 2 Language Awareness Exam	Take-away examination
Unit 3 Language Learner Profile (LLP)	Written assignment profiling a selected student's language competence and proposing a language development pathway
Unit 4 Materials Assignment (Mat A)	Review of material you have created and used in your teaching practice
Unit 5 Unknown Natural Language (UNL)	Written report on your experience of learning a mystery language

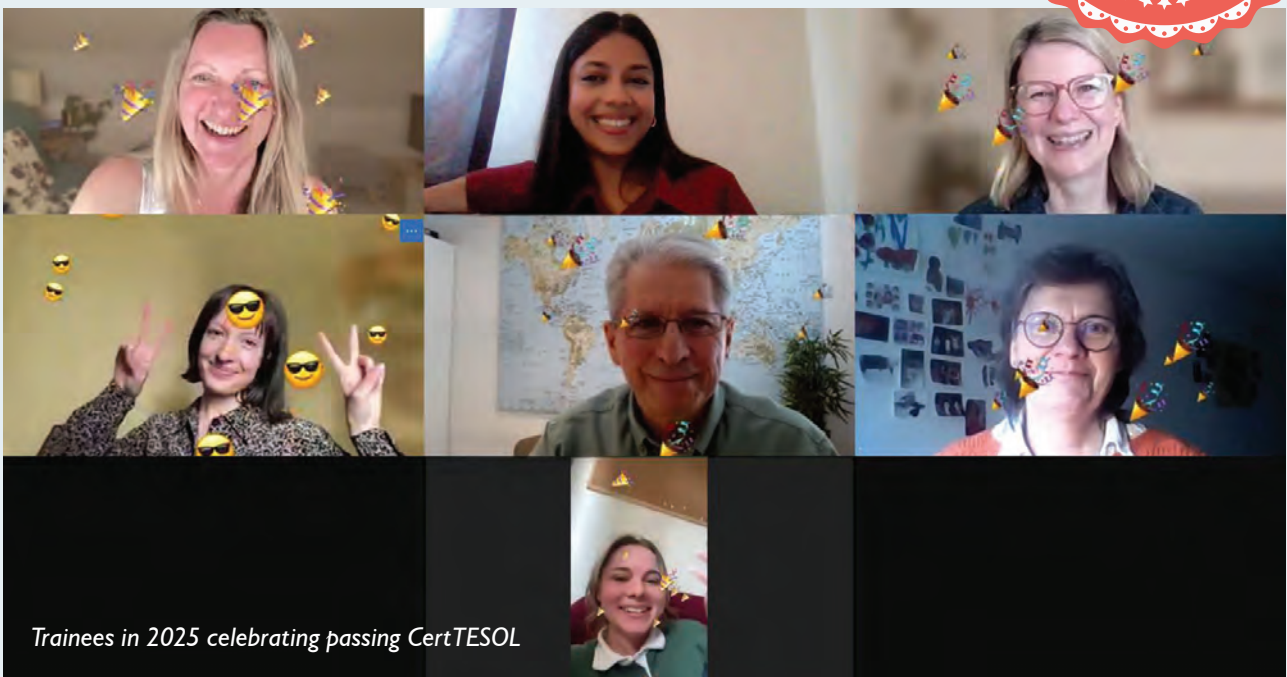
*In preparation for the four assessed lessons, you will have two observed 60-minute lesson for which you will receive feedback.

Trinity moderation takes place on the final day. You will be interviewed individually and as a group. The moderator also reviews all course work.

Pass Rates

January 2017 – April 2025

- 103 passes out of 115 trainees (90%)
- 11 withdrawals
- 1 Fail



“It’s a bit like ‘teaching boot camp’... in a good way! It’s rewarding and enjoyable.” Becky Sloper

How to Apply



Applying is as easy as 1, 2, 3! But if you do have any questions, feel free to contact Abby Croucher at abby@lewis-school.co.uk or chat with us on our website, www.lewis-school.co.uk.

Entry Requirements

Age	18+ years
Education / Experience	Enough to enter higher education in your own country / OR equivalent demonstrated student potential / OR suitable work achievements
Level of English	Advanced reading, writing, aural and oral skills required. Non-native teachers must demonstrate an English level across all four skills equivalent to C1+ on CEFR.
Application	Successful completion of online application form including pre-interview task. One interview stage (face-to-face or video conferencing) including a writing task.

Funding Opportunities

Armed Forces Learning (ELC) Scheme

We are an Approved Learning Provider under the Armed Forces Learning (ELC) Scheme (provider no.6467). This scheme is open to all serving members of the Armed Forces and any ex-service personnel who are registered for ELC. If you are planning your resettlement training or want to further your own professional development, get in touch.

Other sources of funding

You may be eligible to apply for funding through other initiatives such as Erasmus+. Speak to your employer, school/university, local council or national funding body to find out more.



*Got any questions?
Visit lewis-school.co.uk
or email Abby at
abby@lewis-school.co.uk*

Course Calendar

13 January – 11 April 2026

Tuesdays & Thursdays: 18.00 - 21.45. Saturdays: 9.00 - 17.30.

Week	Dates	Content	Assignment Deadlines*
1	Tuesday 13 January	INPUT	Sat 17 Jan – UNL journal 1
	Thursday 15 January	INPUT	
	Saturday 17 January	INPUT	
2	Tuesday 20 January	INPUT	Mon 19 Jan – UNL journal 2
	Thursday 22 January	INPUT	
	Saturday 24 January	INPUT	
3	Tuesday 27 January	INPUT	Fri 30 Jan – UNL 1st submission
	Thursday 29 January	INPUT	
4	Tuesday 3 February	INPUT	Mon 2 Feb – LLP check 1 Sat 7 Feb – LLP check 2
	Thursday 5 February	INPUT	
	Saturday 7 February	INPUT	
Study Break			
5	Tuesday 17 February	INPUT	Mon 16 Feb – UNL final submission Mon 16 Feb – LLP 1st submission
	Thursday 19 February	INPUT	
6	Tuesday 24 February	TEACHING (60 min)	TPEs
	Thursday 26 February	TEACHING (60 min)	
	Saturday 28 February	INPUT	
7	Tuesday 3 March	TEACHING (60 min)	TPEs
	Thursday 5 March	TEACHING (60 min)	
8	Tuesday 10 March	TEACHING (60 min)	TPEs
	Thursday 12 March	TEACHING (60 min)	
	Saturday 14 March	INPUT	
9	Tuesday 17 March	TEACHING (60 min)	TPEs
	Thursday 19 March	TEACHING (60 min)	
10	Tuesday 24 March	TEACHING (60 min)	TPEs Sat 28 Mar - LLP final submission Sat 28 Mar - Exam submission
	Thursday 26 March	TEACHING (60 min)	
	Saturday 28 March	INPUT	
11	Tuesday 31 March	TEACHING (60 min)	TPEs MatA – to be checked this week
	Thursday 2 April	TEACHING (60 min)	
12	Tuesday 7 April	INPUT	Thu 9 Apr – All work submitted
	Thursday 9 April	INPUT	
	Saturday 11 April	MODERATION	

*Abbreviations refer to the course units listed on page 5.

Any questions?

If you want to find out more, we'd love to hear from you. Email Abby at abby@lewis-school.co.uk or visit our website at www.lewis-school.co.uk.

Course Calendar

8 September - 5 December 2026

Tuesdays & Thursdays: 18.00 - 21.45. **Saturdays:** 9.00 - 17.30.

Week	Dates	Content	Assignment Deadlines*
1	Tuesday 9 September	INPUT	Sat 12 Sep – UNL journal 1
	Thursday 10 September	INPUT	
	Saturday 12 September	INPUT	
2	Tuesday 15 September	INPUT	Mon 14 Sep – UNL journal 2
	Thursday 17 September	INPUT	
	Saturday 19 September	INPUT	
3	Tuesday 22 September	INPUT	Fri 27 Sep – UNL 1st submission
	Thursday 24 September	INPUT	
4	Tuesday 29 September	INPUT	Mon 28 Sep – LLP check 1 Sat 3 Oct – LLP check 2
	Thursday 1 October	INPUT	
	Saturday 3 October	INPUT	
Study Break			
5	Tuesday 13 October	INPUT	Mon 12 Oct – UNL final submission Mon 12 Oct – LLP 1st submission
	Thursday 15 October	INPUT	
6	Tuesday 20 October	TEACHING (60 min)	TPEs
	Thursday 22 October	TEACHING (60 min)	
	Saturday 24 October	INPUT	
7	Tuesday 27 October	TEACHING (60 min)	
	Thursday 29 October	TEACHING (60 min)	
8	Tuesday 3 November	TEACHING (60 min)	TPEs
	Thursday 5 November	TEACHING (60 min)	
	Saturday 7 November	INPUT	
9	Tuesday 10 November	TEACHING (60 min)	TPEs
	Thursday 12 November	TEACHING (60 min)	
10	Tuesday 17 November	TEACHING (60 min)	TPEs Sat 21 Nov - LLP final submission Sat 21 Nov - Exam submission
	Thursday 19 November	TEACHING (60 min)	
	Saturday 21 November	INPUT	
11	Tuesday 24 November	TEACHING (60 min)	TPEs MatA – to be checked this week
	Thursday 26 November	TEACHING (60 min)	
12	Tuesday 1 December	INPUT	Thu 3 Dec – All work submitted
	Thursday 3 December	INPUT	
	Saturday 5 December	MODERATION	

*Abbreviations refer to the course units listed on page 5.

Any questions?

If you want to find out more, we'd love to hear from you. Email Abby at abby@lewis-school.co.uk or visit our website at www.lewis-school.co.uk.



Hear from our former CertTESOL trainees!

On our YouTube channel, you'll find interviews with those who have previously taken the course, giving you an inside view of the CertTESOL experience!



Visit <https://www.youtube.com/lewisschooltv>.

Discover what else Lewis has to offer!

Adults (16+)



Juniors (11-17)



Theatre



www.lewis-school.co.uk

LEWIS TEACHER TRAINING CENTRE

Lewis School of English, 30-33 Palmerston Road, Southampton SO14 1LL, UK

Tel. +44 23 8022 8203 study@lewis-school.co.uk

Lewis Schools Ltd (trading as Lewis School of English). Registered in England, No. 03312844. Registered office: 33 Palmerston Road, Southampton SO14 1LL, UK. Information correct at time of going to print. For complete and up-to-date details, please visit our website.

