



LEWIS SCHOOL OF ENGLISH

Year-Round Junior Programmes

September 2021 - June 2022

Develop
your confidence
with English.
Discover the city
of the Titanic!





Key Facts



Location
City centre



Dates
September 2021 - Mid-June 2022



Ages
8+



Accommodation
Homestay (twin room)
Residential (single en-suite room)



Distance from Airports
Southampton (SOU) 6 km
London Heathrow (LHR) 110 km
London Gatwick (LGW) 140 km
London Stansted (STN) 195km

Contents

- 3 Welcome to Southampton
- 4 Our School
- 5 Lessons and Activities
- 6 Cultural Week
- 7 Young Entrepreneurs
- 8 English & Theatre
- 9 Promenade Theatre
- 10 Storytelling
- 11 Create Your Own Programme
- 12 Trips
- 13 Homestay Accommodation
- 14 Residential Accommodation
- 14 Hotel Accommodation
- 15 London Colney Centre
- 16 Live Online Programmes
- 17 Welfare

Year-Round Junior Groups

Lewis School of English, Southampton



Why wait until summer? We welcome junior groups all year round at our main school in Southampton, with a unique and exciting range of programmes to engage your students and build their confidence with English. Select a cultural, performing arts or business-related programme, or let us create a tailor-made programme for your group's specific. We look forward to giving you and your students a warm welcome in the dynamic city of Southampton.



City centre location, opposite a beautiful park



Interactive project-based lessons that link with activities



Creative and innovative range of programmes



*"A great and fascinating week.
I learnt a lot and had fun."*
Kevin, France

Welcome to Southampton

With cruise ships, Titanic history, beautiful parks and two universities, Southampton (population 250,000) is a great place to stay, and our school is right in the centre. London is only 75 minutes by train, and it's an easy journey to Oxford, Bath, the Isle of Wight and many more of England's treasures.

Southampton is best known for the Titanic, which sailed from here in 1912. The excellent SeaCity Museum explores Southampton's maritime past and features an exhibition on the Titanic. Today, the city is still the 'cruise ship capital' of England. You can enjoy the waterfront on our cruise evenings - see the timetable for details.

Although modern and dynamic, Southampton has a rich history, and many of its medieval walls still stand today. The city also has an excellent shopping centre, a Premier League football team, and over 50 parks and green spaces, making it one of the greenest cities in the UK. You'll soon see why Southampton was recently ranked in the top 3 cities to live and work in the UK*.

**PwC Good Growth for Cities Index 2019*

Lots to see and do!

You'll love WestQuay Shopping Centre, Watermark (a fabulous new £85m restaurant and entertainment complex - see front cover, bottom right), the City Art Gallery and the charming Tudor House Museum in the Old Town. There are also huge parks opposite the school - ideal for outdoor games or just to relax at lunchtime.



Tudor House Museum



Bargate Monument



Parks opposite Lewis School



Queen Mary 2 in Southampton's docks

Our School

Established in 1976, we welcome students from over 50 countries every year to our school, and we look forward to welcoming you too! We're based in four 18th-century buildings with a garden at the back and a friendly atmosphere throughout. We're lucky enough to be right in the centre of Southampton, opposite a beautiful park. Everything you need is nearby - the city centre shops, the residence and the bus stops for homestay students are just a few minutes' walk from the school.



- ✓ 15 classrooms
- ✓ Computer room and free Wi-Fi
- ✓ Garden with table tennis
- ✓ Coffee room with snacks/drinks machine
- ✓ Prayer room
- ✓ Convenient city centre location



Lessons and Activities



Learning with Lewis

Our motto is 'let your English come to life!' and we aim to facilitate this in every aspect of our programme.

Lessons are project-based. We find this increases student motivation and encourages speaking, as students have a real reason to communicate as they work towards a end goal. Whether this is a presentation on the local culture, a video project, a theatre or storytelling performance, or a sales pitch for a new product, students come away feeling they have achieved something through their use of English. Many feel more confident in their language abilities as a result.

Activities link closely with lessons, reinforcing what has been learnt in the classroom and helping to bring to life the attractive trips and museum visits that are so often the highlights of the students' stay. A range of trip options are on offer - see page 11.

Our teachers and activity leaders combine knowledge and passion for their chosen field with a warm and personal approach. During our first day grammar and speaking test, we learn about each student's interests and language learning aims. We try to address these during the course as we build a positive atmosphere that promotes learning.

The following pages present our exciting and unique range of programmes, but no matter which you choose, you can be sure that your students will have a truly memorable and valuable experience.

Trinity Exams

Every year, we welcome groups who wish to prepare for a Trinity GESE exam, for which our school is a registered exam centre (additional fee required). Contact us for details and prices.



Museums in Southampton

SeaCity Museum (Titanic history)
Tudor House Museum
Solent Sky (Aviation)
City Art Gallery

Cultural Week

- ✓ Suitable for Pre-Intermediate (A2) level and above
- ✓ Local visits combined with culture-themed English lessons
- ✓ Work towards a final presentation

Our most popular year-round course! Students have a unique chance to develop their language skills by actively learning about our culture and heritage. This programme blends English language tuition with culture-related project work on a theme of your choice, for example Southampton's maritime history and the story of the Titanic. Our staff spend all morning and afternoon with the students, taking them to places of interest where students conduct research, and returning to the classroom to consolidate their knowledge, develop language further, and work towards a final presentation.



Project work where students actively learn about our history and culture.



Sample Timetable

	Monday	Tuesday	Wednesday	Thursday	Friday	Saturday	Sunday
Theme	Welcome	Pre-18th Century	Going to America	World War II	Today & Tomorrow	London	Breakfast
Morning	Test / Lessons	Lessons	Lessons	Solent Sky Museum	Art Gallery / Lessons	London Trip Packed Lunch	Optional Full-Day Trip on Request/ Homestay / Departure
	Lunch	Lunch	Lunch	Lunch	Lunch		
Afternoon	Tudor House Museum	Winchester Trip	Sea City Museum	Presentation Preparation	Presentations & Certificates		
	Dinner	Dinner	Dinner	Dinner	Dinner	Dinner	
Evening	Homestay / Residence	Homestay / Residence	Evening Activity	Homestay / Residence	Evening Activity	Homestay / Residence	

Photos: costumes and project work at Tudor House, Sea City Museum visit, presentation, fun in London!



Young Entrepreneurs

- ✓ Suitable for Intermediate (B1) level and above
- ✓ Ideal for ages 14+
- ✓ 15 hours of English lessons per week, or as required
- ✓ 12 hours of business sessions per week, or as required
- ✓ Variety of trips and activities

Do you like to think big? Would you like to run your own business one day, or work in an international company? Have you ever thought about launching a brand new product?

If you've answered 'yes' to any of the above, Young Entrepreneurs could be the course for you! You'll meet students from around the world and work in teams on business-related project work, developing language skills, soft skills and practical knowledge along the way.

Teamwork, leadership and creative problem-solving are key as you set about tasks such as launching a new product, devising a business plan or making a sales pitch in the style of the hit TV show *Dragon's Den*. Fun, lively and interactive, lessons cover case studies, market research and advertising strategies, and train you in valuable skills such as web design and how to give a great presentation.

In addition to business sessions, you'll improve your language skills with General English classes. You'll also have the chance to discover England with full-day and half-day trips, and to take part in evening activities.



Perform an outdoor show around Southampton's historic streets.



Sample Timetable

	Monday	Tuesday	Wednesday	Thursday	Friday	Saturday	Sunday
	Breakfast	Breakfast	Breakfast	Breakfast	Breakfast	Breakfast	Breakfast
Morning	Test / English Lessons	English Lessons	English Lessons	English Lessons	English Lessons	Full-Day Trip Packed Lunch	Optional Full-Day Trip on Request/ Homestay / Free Day / Departure
Afternoon	Business Session	Half-Day Trip	Business Session	Business Session	Business Session		
	Dinner	Dinner	Dinner	Dinner	Dinner	Dinner	
Evening	Homestay / Residence	Homestay / Residence	Evening Activity	Homestay / Residence	Evening Activity	Homestay / Residence	

"It's a beautiful place to learn a foreign language... here you can find a lot of lovely and kind people."
Ruth, Italy

English & Theatre

- ✓ Suitable for all levels of English
- ✓ 15 hours of General English per week, or as required
- ✓ 12 hours of performing arts per week, or as required
- ✓ Variety of trips and activities
- ✓ Work towards a final performance

A fantastic mix of English lessons and theatre workshops, developing your confidence with language inside and outside the classroom. During our workshops you'll develop your skills in singing, dancing and acting. The theatre component of the course can be tailor-made to your group's needs. For example, it can tie in with a text or genre on your school curriculum. Alternatively, you can choose from our wide range of suggestions - from horror to Shakespeare to musicals!



Improve your skills in singing, acting and dancing

Students will learn the importance of effective warm-ups for voice and body, plus exercises to improve pronunciation and diction. They'll also learn how to bring a text to life. Our students invariably find the performing arts are not only great fun, but also highly beneficial for their English. We can't wait to give your group an unforgettable experience!

Sample Timetable

	Monday	Tuesday	Wednesday	Thursday	Friday	Saturday	Sunday
	Breakfast	Breakfast	Breakfast	Breakfast	Breakfast	Breakfast	Breakfast
Morning	Test / English Lessons	English Lessons	English Lessons	English Lessons	English Lessons	Full-Day Trip	Optional Full-Day Trip on Request/ Homestay / Free Day / Departure
	Lunch	Lunch	Lunch	Lunch	Lunch		
Afternoon	Theatre Session	Half-Day Trip	Theatre Session	Theatre Session	Theatre Session	Packed Lunch	
	Dinner	Dinner	Dinner	Dinner	Dinner	Dinner	
Evening	Homestay / Residence	Homestay / Residence	Evening Activity	Homestay / Residence	Evening Activity	Homestay / Residence	



Promenade Theatre

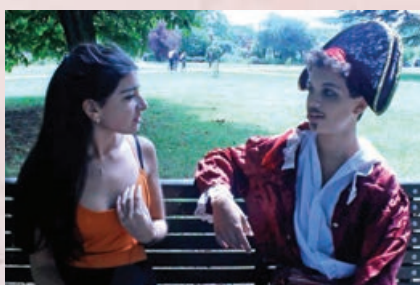
- ✓ Suitable for Intermediate (BI) level and above
- ✓ 15 hours of theatre sessions per week, or as required
- ✓ Variety of trips and activities
- ✓ Work towards an outdoor show

If you love performing and want to meet British students, our Promenade Theatre programme is the course for you! Promenade is an outdoor form of theatre where both the actors and the audience move from place to place during the performance. On this course, you'll work towards performing a piece of outdoor theatre against the backdrop of Southampton's beautiful parks and historic old town.

Throughout the course, you'll enjoy sessions on storytelling, performance techniques, playing to an audience and working from a script - all in a fun and creative environment. It's an experience not to be missed!



Perform an outdoor show around Southampton's historic streets.



Sample Timetable

	Monday	Tuesday	Wednesday	Thursday	Friday	Saturday	Sunday
	Breakfast	Breakfast	Breakfast	Breakfast	Breakfast	Breakfast	Breakfast
Morning	Theatre Session	Theatre Session	Theatre Session	Theatre Session	Theatre Session	Full-Day Trip to London Packed Lunch	Optional Full-Day Trip on Request/ Homestay / Free Day / Departure
	Lunch	Lunch	Lunch	Lunch	Lunch		
Afternoon	Visit to Local Attraction	Half-Day Trip	Team Challenge & Physical Activities	Creative Arts Project	Promenade Theatre Performance		
	Dinner	Dinner	Dinner	Dinner	Dinner	Dinner	
Evening	Homestay / Residence	Homestay / Residence	Evening Activity	Homestay / Residence	Evening Activity	Homestay / Residence	

"I like very much the atmosphere and rapport with the leader and teachers."
Sara, Italy

Storytelling

- ✓ Suitable for all levels of English
- ✓ English lessons, storytelling sessions, trips and other activities
- ✓ Work towards a final performance

Humans are hard-wired for stories! Developing storytelling skills not only helps with language learning but also helps students to become effective communicators.

Students explore the plot and characters of a popular story and learn how to use their voice and body to bring it to life, working towards a final class performance. The text can be of your choosing, or we can propose a suitable project based on your group's age, level and interests.

As with our Promenade Theatre and English & Theatre courses, the creative sessions are led by performing arts professionals. Fun-filled, interactive and entertaining sessions will help develop your students' confidence in speaking.



Explore a text and improve your speaking skills!



Create Your Own Programme

- ✓ 1 - to 4-week stays
- ✓ Homestay, hotel or residential accommodation
- ✓ Packed lunches and/or restaurant meals
- ✓ Wide range of trips to choose from (see next page)
- ✓ Lessons can match the theme of your school project or curriculum
- ✓ Trinity GESE exams can be added (additional fee)



Contact us and let's design the perfect programme!

Many of our groups have specific requests for their programmes. This can be anything from a particular trip or tourist attraction to a very specialised programme on a particular topic, to tie in with your school's curriculum.

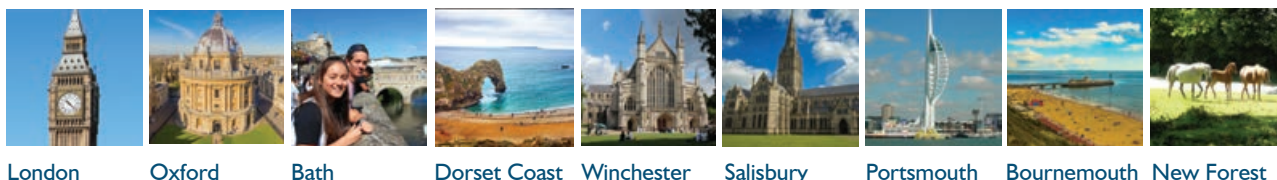
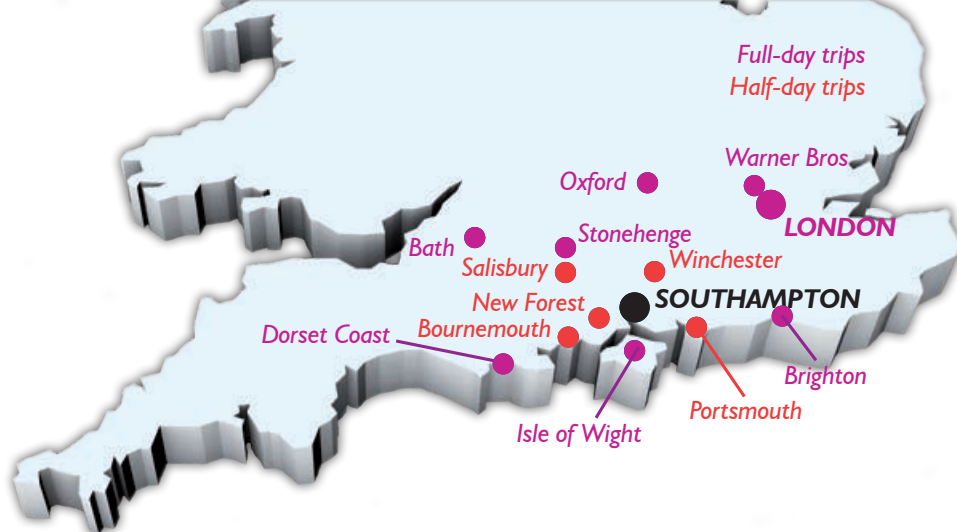
Whatever your group's needs, our friendly team are ready to work with you to create an engaging proposal that suits your group's age, interests, English level and budget. We look forward to working with you to create a truly memorable experience for your students.

Sample Timetable

	Monday	Tuesday	Wednesday	Thursday	Friday	Saturday
	Breakfast	Breakfast	Breakfast	Breakfast	Breakfast	Breakfast
Morning	English Lessons	English Lessons	English Lessons	Full-Day Trip to London (or other destination) Packed Lunch	English Lessons	Departure
	Lunch	Lunch	Lunch		Lunch	
Afternoon	City Tour / Tudor House Museum	Activity	Sea City Museum / Art Gallery		Activity	
	Dinner	Dinner	Dinner	Dinner	Dinner	
Evening	Homestay / Residence	Evening Activity	Homestay / Residence	Homestay / Residence	Certificate Ceremony / Evening Activity	



Trips



	Destination	Suggested Activities*	Possible Learning Theme
Full-Day Trips	London	Walking tour and Thames Cruise, museum visit, ride on London Eye or entrance to other attraction	Famous attractions
	Oxford	Walking tour and entry to an Oxford College	University of Oxford
	Bath	Walking tour and entry to Roman Baths Museum	Roman Britain
	Dorset Coast	Walk at Lulworth Cove. Free time in Swanage.	The seaside
	Brighton	Walking tour, beach & Brighton Pier attractions	The seaside
	Isle of Wight (IOW)	Ferry ride, Osborne House or Needles Attraction	The seaside / Queen Victoria
	Stonehenge	Entry to Stonehenge, free time in Salisbury	Stonehenge
	Warner Bros	The Making of Harry Potter (Warner Bros Studio)	Harry Potter
Half-Day Trips	Winchester	Walking tour and entry to Great Hall (Round Table)	King Arthur & King Alfred
	Portsmouth	Walking tour and entry to Spinnaker Tower	Towers of the world
	Salisbury	Walking tour and entry to Salisbury Cathedral	Magna Carta / Cathedrals
	Bournemouth	Walking tour and games on the beach	The seaside
	New Forest	Exploration and games	Nature

*Price of trips will vary depending on destination and attractions visited. Some attractions may need to be booked weeks or months in advance - contact us for details. More information about the above destinations can be found in 'Your Guide to Trips'.



Homestay Accommodation

Staying in a homestay can be a valuable part of your language course. Your host welcomes you into their home and gives you a comfortable and friendly base during your stay. You live as part of the household, taking meals together and sharing the common living areas. All homestay hosts have been personally approved by the school and are regularly inspected. Homestays are 10-35 minutes by bus from the junior centre. Our recommended minimum age for homestay accommodation is 13. All homestay accommodation is arranged by Lewis School.

- ✓ Hosts personally approved and inspected by Lewis School
- ✓ Twin rooms for students (single/twins for leaders as requested)
- ✓ Bus pass included
- ✓ Timetable includes certain evenings spent with your host



What can I expect in a homestay?

Your host will welcome you, provide you with a comfortable room where you can study and relax, and explain the household arrangements. They will give you a change of towel and bed linen every week, and will wash your clothes. However, please remember that it is a home and not a hotel, so we ask you to respect the house rules. Travel to school is by bus. Your host will show you the journey on your first morning.

We give you a bus pass and every day, after school has finished, we take you to your bus stop.

Homestay can be an extremely rewarding experience. Our hosts receive excellent feedback, and many students stay in touch with their hosts long after they return home.

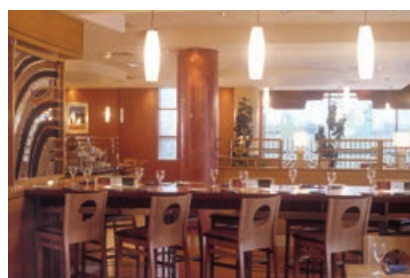
*"My host family are very nice,
and I love my room."
Panna, Hungary*

Residential Accommodation



We offer residential accommodation with a number of providers that are just a short walk from the school. All have attractive, modern facilities. Please contact us for more details.

Hotel Accommodation



We can also arrange hotel accommodation at Jury's Inn Southampton, a 3-star hotel just a 5-minute walk from the school. The hotel can offer twin/triple rooms for students and single/twin rooms for group leaders as requested.

Mealtimes

Meals can be arranged with local restaurants. Southampton offers a wide range of options within easy walking distance of the school. If you would like to find out more, or if you have specific requests, please feel free to contact us.



London Colney

Discover Our Other Year-Round Centre

- ✓ So close to London, Windsor & Harry Potter Studio Tour
- ✓ 1- to 4-week stays (groups of 30+)
- ✓ Residential accommodation (shared rooms)
- ✓ Based at Academy St Albans

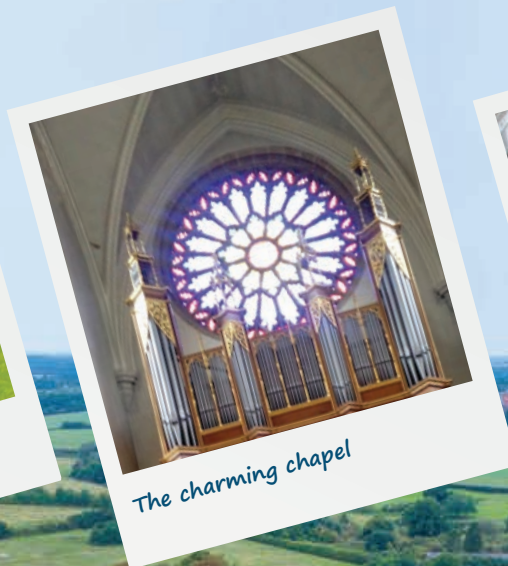


Looking like a scene from the movies, our London Colney centre oozes traditional school charm. It's set in a majestic 19th-century building and within 36 hectares of beautiful grounds. You'll love the traditional quad (a garden surrounded by buildings on all four sides), the chapel and the stunning great hall - an ideal space for performances and parties. Teaching facilities are spacious and modern, with 15 large classrooms, many with interactive whiteboards, and an excellent study centre. Activity spaces include a common room with TV and games, an art room, outdoor basketball, football pitches, a campfire site, and a wealth of green space for walking or orienteering. Wi-Fi is available throughout the ground floor of the main building and there is 24/7 gated security.

Our centre is just 1.5km from London Colney village and, as well as the capital, there are plenty of nearby attractions, such as the cathedral city of St Albans (6km) and, for Harry Potter fans, Warner Bros Studio Tour (15km). You'll truly have the best of both worlds in London's countryside!



The elegant main quad



The charming chapel



Exploring London!

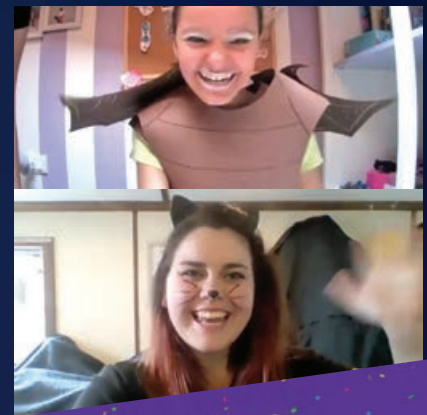
Live Online Courses

Fun & Innovative After-School Tuition

- ✓ Live lessons on Zoom
- ✓ Maximum 10 students per class (or as required)
- ✓ 24-hour access to online self-study area
- ✓ Online placement test
- ✓ Welcome pack, learning materials, certificates and reports
- ✓ From as little as 1 lesson per week

Let online learning come to life with our tailor-made programmes for junior groups. Live, interactive, face-to-face lessons combine with project work to create an engaging and motivating programme. A wide range of programme are available and all are designed to gets students communicating and exploring the language. Online social activities can also be added on request.

Visit our website for more details and check out our YouTube channel to check out the work achieved by previous groups



Online social activities can be included

Classic Options

- ★ General English
- ★ Young Entrepreneurs
- ★ Conversation
- ★ 1:1 and 2:1 Lessons
- ★ Tailor-Made Programmes

Creative Options

- ★ Storytelling
- ★ Pop Music
- ★ Literature
- ★ British TV
- ★ Podcasting
- ★ Blogging



Welfare



Your safety and well-being are our top priorities. Here's how we ensure this.

- ✓ Fully-supervised programme
- ✓ 24-hour emergency phone number
- ✓ All staff are DBS-checked and trained in welfare and safeguarding
- ✓ Regular meetings with group leaders

COVID Safety

We closely follow government guidance on Covid safety. Please see our website for the latest travel information and any school safety measures.

A Warm Welcome!

As part of our warm welcome, you'll be given an introductory talk, a welcome pack and a tour on your first day. You're also given a card with your accommodation address and the emergency phone number. We can also provide an optional 'meet and greet' service (additional fee) to welcome you on arrival at the airport and ensure a smooth transition to the centre.

Caring for You and Your Group

We work closely with Group Leaders to ensure their students are happy and are getting the most from their stay. We are always available to discuss any issues, and we organise regular meetings between Group Leaders and key staff.

Safeguarding

We take great care to ensure the safety and well-being of all our students, and for this reason we have very robust safeguarding procedures. For example, all of our staff are DBS-checked (police-checked) and receive training in safeguarding issues. All hosts in homestay accommodation for under-18s are also DBS-checked. You can read our Safeguarding Policy in full on the School Policies page of our website.

Here to Help You!

Feel free to contact us if you'd like to know more about our programmes



Alistair Walker
Owner / Director
alistair@lewis-school.co.uk






Marcella Ciravegna
Head of Marketing & Operations
marcella@lewis-school.co.uk



Suzie Brierley
Welfare Manager / Reception
study@lewis-school.co.uk

Lewis School of English
30-33 Palmerston Road
Southampton SO14 1LL, UK

+44 23 8022 8203
www.lewis-school.co.uk

 [lewischoolofenglish](https://www.facebook.com/lewischoolofenglish)
 [lewischoolofenglish](https://www.instagram.com/lewischoolofenglish)
 [lewischooltv](https://www.youtube.com/lewischooltv)

Discover what else Lewis has to offer!

Adults (16+)



Teacher Training



Online Courses



www.lewis-school.co.uk

LEWIS SCHOOL OF ENGLISH

30-33 Palmerston Road, Southampton SO14 1LL, UK

Tel. +44 23 8022 8203 study@lewis-school.co.uk

Lewis Schools Ltd (trading as Lewis School of English). Registered in England, No. 03312844. Registered office: 33 Palmerston Road, Southampton SO14 1LL, UK. Information correct at time of going to print. For complete and up-to-date details, please visit our website.

10 Reasons to Choose Lewis Junior Programmes

- ① Challenging and motivating lessons
- ② Innovative range of programmes
- ③ Strong links between learning and leisure
- ④ All centres British Council accredited
- ⑤ Attractive locations within travelling distance of London
- ⑥ Excellent level of care
- ⑦ Over 30 nationalities per year
- ⑧ Homestay and residential options
- ⑨ Choice of summer and year-round centres
- ⑩ 45 years' experience in teaching English

