



LEWIS SCHOOL OF ENGLISH

English & Football

Winchester Junior Centre

2024

29 June - 27 July



Accredited by the
BRITISH COUNCIL
for the teaching
of English in the UK



LET YOUR ENGLISH COME TO LIFE!

English & Football

University of Winchester



English & Football offers you an exciting combination of professional football coaching, English lessons, trips and many other activities. As well as developing your football skills, you'll improve your English, discover amazing places in the UK and make friends from around the world. Our centre is based on a modern university campus in historic Winchester (population: 48,000), which was England's capital before London. You're sure to have a great summer here in one of England's most beautiful locations!

- ✓ 15 hours of English lessons & 9 hours of sports sessions per week
- ✓ Matches against a mixed nationality or British school team
- ✓ Vibrant programme of trips and other activities



"Lovely town!"
"I loved Winchester. When I was younger, I learnt the stories of the Round Table."
Junior group from Italy



Key Facts



Location

University campus



Dates

29 June - 27 July 2025

Join for 1-4 weeks

- Individuals can arrive on any Sunday
- Groups staying 1 week can arrive any Sunday
- Groups staying 2 weeks arrive on 29/6 or 13/7
- For longer stays or different dates, contact us.



Ages

11-17*



Accommodation

Residential (single en-suite)



Weekly Trips

- | full-day trip
- | half-day trip
- | local visit



Distance from Airports

Southampton (SOU) 18 km
London Heathrow (LHR) 90 km
London Gatwick (LGW) 125 km
London Stansted (STN) 180 km

*We may accept a younger or older student from the same school year as someone else in the group.

Contents

- 3 Welcome to our Winchester Centre
- 4 Accommodation
- 5 Beautiful Historic City
- 6 English & Football Programme
- 9 Trips
- 10 Welfare

Front cover & above right: football session
Below right: dressing up in the Great Hall.

Welcome to our Winchester Centre

Our centre is based at the University of Winchester, whose origins go back to 1840 and which was granted university status in 2005. The university has recently undertaken a number of impressive development projects, so you'll find an attractive blend of historic and modern architecture on campus. It offers a safe and peaceful environment but is just a 15-minute walk from the city centre.



Photos show campus views, disco venue and sports hall.



Accommodation

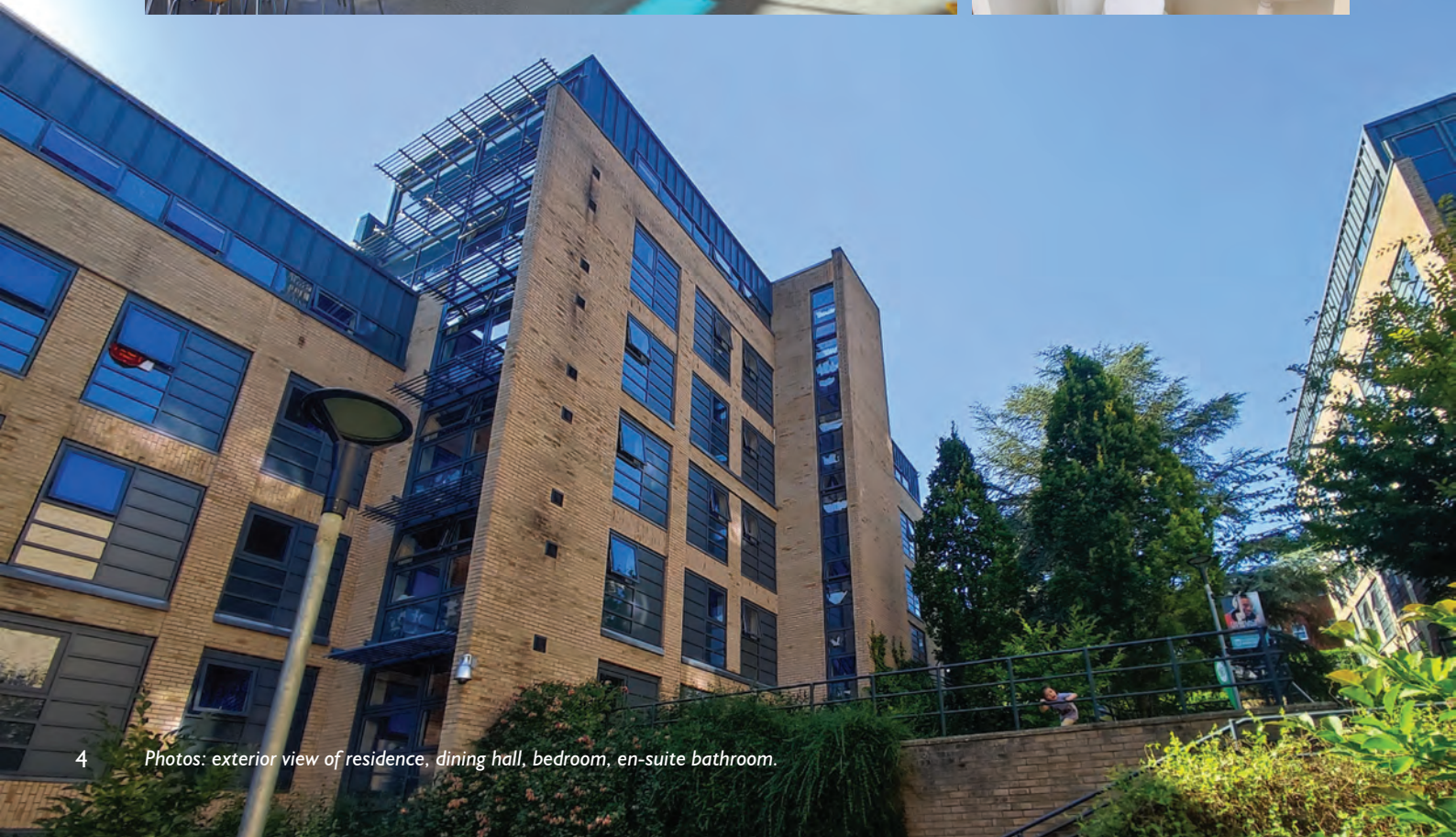
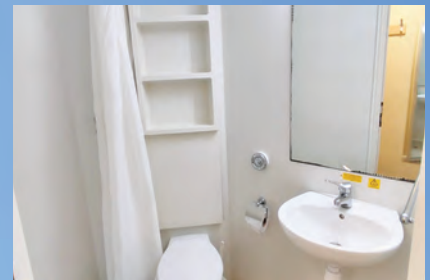
Residential accommodation is provided on campus in attractive halls with a 24/7 security service.

Residence Details

- Full board accommodation, arranged by Lewis School
- Single rooms with en-suite toilet, washbasin and shower facilities
- All meals taken at dining hall (packed lunch on Sunday and for full-day trip)
- Please note that the campus shop has limited opening times and stock during the summer
- Bed linen and towels provided (laundry of bed linen and towels included)
- For washing of clothes, there is a laundry operated by an app. Costs: £2.90 per wash, £1.90 per dry.
- Wi-Fi available in all bedrooms

'No Accommodation' Programmes

We also welcome students who have their own accommodation. Our 'No Accommodation' students attend dinner and evening activity twice per week instead of every day. See our price list and timetable for full details.



Beautiful Historic City

A thousand years ago, beautiful Winchester was the capital city of England. Today, it's visited by 4 million people every year, and you'll soon see why. Here are some of its highlights.

At the heart of the city is Winchester Cathedral. This Gothic masterpiece was built in the 11th century and was used in the filming of *The Da Vinci Code*. Another attraction not to be missed is The Great Hall. This is the only surviving part of the old Winchester Castle. It is best known for the Round Table, which has hung in the hall for over 700 years. According to myth, the wizard Merlin created the original Round Table for King Arthur. This is an imitation believed to be made in the 13th century for King Edward I.

As you explore its charming historic streets, you'll find echoes of famous figures such as 19th century novelist Jane Austen, who lived in the city and is buried in the cathedral, and King Alfred, a celebrated Saxon king.

With riverside walks, hilltop views and a buzzing centre with enticing shops and restaurants, you're sure to love this special city.



Winchester High Street



Medieval fancy dress!



Statue of King Alfred the Great



English & Football Programme

- ✓ Ages 11-17 (all levels of English welcome)
- ✓ 15 hours of English lessons per week
- ✓ 9 hours of football sessions per week (refreshments provided)
- ✓ Weekly trips and a variety of evening activities
- ✓ Average 12-15 students per English class (maximum 18)
- ✓ Weekly friendly matches - includes taxi transfer and refreshments



Sample Weekly Timetable

	Sunday	Monday	Tuesday	Wednesday	Thursday	Friday	Saturday	Sunday
	Breakfast	Breakfast	Breakfast	Breakfast	Breakfast	Breakfast	Breakfast	Breakfast
Morning		Placement / Lessons* (3 hours)	Lessons* (3 hours)	Lessons* (3 hours)	Lessons* (3 hours)	Lessons* (3 hours)	Full-Day Trip	Arrival / Departure/ Activities on Campus / Friendly Match
	Arrival	Lunch	Lunch	Lunch	Lunch	Lunch		
Afternoon		Local Visit	Football: Fitness & Technical Coaching	Half-Day Trip	Football: Possession & Attacking Overloads	Football: Shape Work & Small-Sided Games	<i>Packed Lunch</i>	
	<i>Chill Out**</i>	<i>Chill Out**</i>	<i>Chill Out**</i>	<i>Chill Out**</i>	<i>Chill Out**</i>	<i>Chill Out**</i>	<i>Chill Out**</i>	<i>Chill Out**</i>
	<i>Dinner</i>	<i>Dinner</i>	<i>Dinner</i>	<i>Dinner</i>	<i>Dinner</i>	<i>Dinner</i>	<i>Dinner</i>	<i>Dinner</i>
Evening	Chill Out**	Activity	Activity	Chill Out**	Activity	Disco	Chill Out**	Film Night

Most new students arrive on a Sunday. However, we can organise arrivals on other days by special arrangement.

On your first school day, you'll have a placement test, your first lesson and a tour of the city/campus. The evening activity will help you make friends with others at the centre.

You'll have a 3-hour football session three days a week, with a different focus each day.

At busy times, lessons alternate between morning and afternoon on a weekly basis.

Each week there are exciting destinations to explore on our full-day and half-day trips. See page 9

Sunday is match day! You'll play against a local British school team or a mixed nationality team. Taxi transfers to the match are provided, and refreshments too!

Please note: this timetable is a sample only - see website for full timetable. Photos are for illustrative purposes only and do not show centre facilities. *English lessons may be in the morning or the afternoon. This alternates on a weekly basis. **See page 10 for information about Chill Out.



Football Sessions

Boost your football skills here in the home country of the Premier League!

Led by a sports professional, you'll have a structured programme of training. The sessions will give you the chance to understand the game better as well as to improve your performance through fitness sessions and analytical exercises. You can then put everything you have learnt into practice during the weekly friendly matches. These will be against students of a similar age - either a local British team or a mixed nationality team.

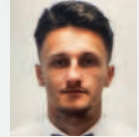
The three weekly sessions are:

- Fitness & Technical Coaching
- Possession & Attacking Overloads
- Shape Work & Small-Sided Games

For many of our English & Football students, the highlight is the chance to visit a football stadium on certain trips. Please note: there is an additional fee for stadium entry. Further details will be available shortly.

Includes matches against a British or mixed nationality team of a similar age!

Meet the Coach Jamie Ricketts



I feel very privileged to be leading this football programme for Lewis School of English. I've had amazing coaching experiences in the past whilst working abroad, so it's great to be able to offer this in my local city of Winchester to students from other countries.

I work for a semi-professional club as Head of Youth Development. This allows me to monitor players' pathways into men's football and give assistance when needed.

I also work as a grassroots scout for Southampton Football Club.

My qualifications are in both coaching and talent identification, which allows me to communicate many different factors of the game.

I believe this program will offer a fantastic experience for students to understand how we coach, study and play football in England.





English Lessons

You'll join students on other programmes for English lessons, trips, local visits and other social activities.

Lewis School lessons are productive and fun. They are designed to help you express yourself, develop soft skills and make friends. We cover all language skills but focus on speaking and listening, as we believe that staying in Britain gives you an ideal opportunity to develop these skills.

Each week there is a new theme and at the end of each week you will complete a project. Some lessons are designed to link to your trips and other activities, helping you to make the most of your programme and to learn more about British culture.

On your first day, we give you a written and oral placement test to assess your level of English and place you in a suitable class. After the test we will give you a Welcome Pack, explain important information about the centre, and take you on a tour of the campus. Then we will introduce you to your teacher for your first lesson. During your stay, we monitor your progress. If you do well, you may have the chance to move to a higher level the following week. At the end of your course, you will receive a report and certificate.

Other Activities

Our activities are exciting and varied. They're designed to encourage communication in English between you and your classmates, and to introduce you to the local culture. Each trip has a learning theme that we explore during English lessons and then reinforce during the trip. In this way, you're prepared with the knowledge and vocabulary to help you get the most out of your visit, making it a more vivid and memorable experience. From treasure hunts to social events, music, drama and team challenges, there's plenty of fun to be had throughout the week!

See page 9 for trip destinations.



Your Course Objectives

- To develop your confidence in communicating in English,
- To improve your skills in listening, speaking, reading and writing, as well as your grammar, vocabulary and pronunciation
- To learn about British culture, particularly in relation to trips and other activities
- To develop your soft skills such as problem-solving and teamwork
- To showcase what you have learnt through weekly projects

Trips



London



Oxford



Bath



Southampton



New Forest



Portsmouth



Bournemouth

	Destination	Includes	Learning Theme
Full-Day	London	Walking tour and Thames cruise	Famous attractions
	Oxford	Walking tour and entry to an Oxford College	University of Oxford
	Bath	Walking tour and entry to Bath Abbey	Georgian Britain
Half-Day	Bournemouth	Walking tour and games on the beach	The seaside
	New Forest	Exploration and games	The countryside
	Southampton	Walking tour and entry to SeaCity Museum	RMS Titanic
	Portsmouth	Walking tour and entry to Spinnaker Tower	Towers of the world

Week	Full-Day Trip	Half-Day Trip
29 June - 5 July	London	Bournemouth
6-12 July	Oxford	Portsmouth
13-19 July	London	Southampton
20-26 July	Bath	New Forest
27 July - 2 August	London	Portsmouth

For more details about trips, including optional extra excursions, download 'Your Guide to Trips: Winchester' at <https://lewis-school.co.uk/brochure-downloads>.



Tower Bridge - one of the sights on our Thames cruise in London

Welfare



Your safety and well-being are our top priorities. Here's how we ensure this.

- ✓ Welfare officer & 24-hour emergency phone number
- ✓ 1:20-supervision ratio on all activities
- ✓ All staff are DBS-checked and trained in welfare and safeguarding
- ✓ Regular meetings with group leaders
- ✓ Lewis School guardian for students without a group leader

A Warm Welcome!

As part of our warm welcome, you'll be given an introductory talk, a welcome pack and a tour on your first day. You're also given a card with your accommodation address and the emergency phone number. We can also provide an optional 'meet and greet' service (additional fee) to welcome you on arrival at the airport and ensure a smooth transition to the centre.

Caring for Groups & Individuals

We work closely with Group Leaders to ensure their students are happy and are getting the most from their stay. Our management staff are always available to discuss any issues, and we organise regular meetings between Group Leaders and our Centre Manager, Head Teacher and Activities Manager. We also welcome many students who arrive unaccompanied. These students are placed under the care and supervision of a dedicated Lewis School guardian.

Safeguarding

We take great care to ensure the safety and well-being of all our students, and for this reason we have very robust safeguarding procedures. For example, all of our staff are DBS-checked (police-checked) and receive training in safeguarding issues. You can read our Safeguarding Policy in full on the School Policies page of our website.

Chill Out Periods

'Chill Out' periods are unsupervised free time for students to relax, study or socialise. If they are outside the residence, they must stay on campus within a designated area and in groups of 3+. Staff can be contacted if needed. Students aged 15+ with permission from parents and the Centre Manager can go into the city centre during afternoon chill out time (not in the evening) and on Sunday mornings/afternoons. They must stay in groups of 3+ and keep their phone switched on.



Let Your English Come to Life!

Innovative language programmes for adults, juniors and teachers
Attractive locations within easy reach of London
Warm and welcoming atmosphere



LEWIS SCHOOL OF ENGLISH

30-33 Palmerston Road, Southampton SO14 1LL, UK
Tel. +44 23 8022 8203 study@lewis-school.co.uk
www.lewis-school.co.uk



Lewis Schools Ltd (trading as Lewis School of English). Registered in England, No. 03312844. Registered office: 33 Palmerston Road, Southampton SO14 1LL, UK.
Information correct at time of going to print. For complete and up-to-date details, please visit our website.

